

# Human CD48/SLAMF2 Protein

Cat. No. SLA-HM148

## Description

<b>Source</b>	Recombinant Human CD48/SLAMF2 Protein is expressed from HEK293 with His tag at the C-Terminus. It contains Gln27-Ser220.
<b>Accession</b>	P09326-1
<b>Molecular Weight</b>	The protein has a predicted MW of 23.4 kDa. Due to glycosylation, the protein migrates to 40-50 kDa based on Bis-Tris PAGE result.
<b>Endotoxin</b>	Less than 1EU per $\mu\text{g}$ by the LAL method.
<b>Purity</b>	> 95% as determined by Bis-Tris PAGE > 95% as determined by HPLC

## Formulation and Storage

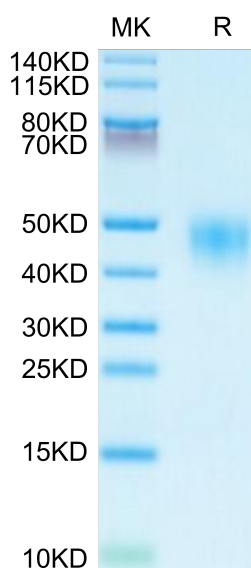
<b>Formulation</b>	Lyophilized from 0.22 $\mu\text{m}$ filtered solution in PBS (pH 7.4). Normally 8% trehalose is added as protectant before lyophilization.
<b>Reconstitution</b>	Centrifuge the tube before opening. Reconstituting to a concentration more than 100 $\mu\text{g}/\text{ml}$ is recommended. Dissolve the lyophilized protein in distilled water.
<b>Storage</b>	-20 to -80°C for 12 months as supplied from date of receipt. -80°C for 3 months after reconstitution. Recommend to aliquot the protein into smaller quantities for optimal storage. Please minimize freeze-thaw cycles.

## Background

CD48, also known as BLAST-1, BCM-1, and SLAMF2, is a 65 kDa GPI-linked protein in the CD2 family of immunoglobulin superfamily molecules. CD2 and 2B4 (CD244) are known ligands for CD48. CD48 protein is expressed on most lineage-committed hematopoietic cells but not on hematopoietic stem cells or multipotent hematopoietic progenitors.

## Assay Data

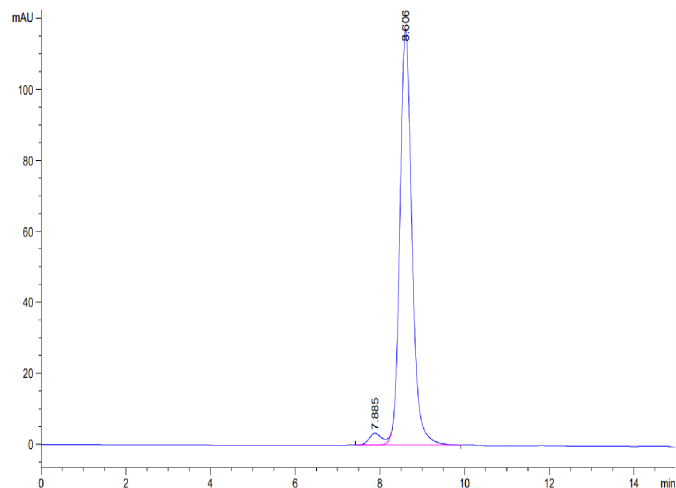
### Bis-Tris PAGE



Human CD48 on Bis-Tris PAGE under reduced condition. The purity is greater than 95%.

### SEC-HPLC

Assay Data

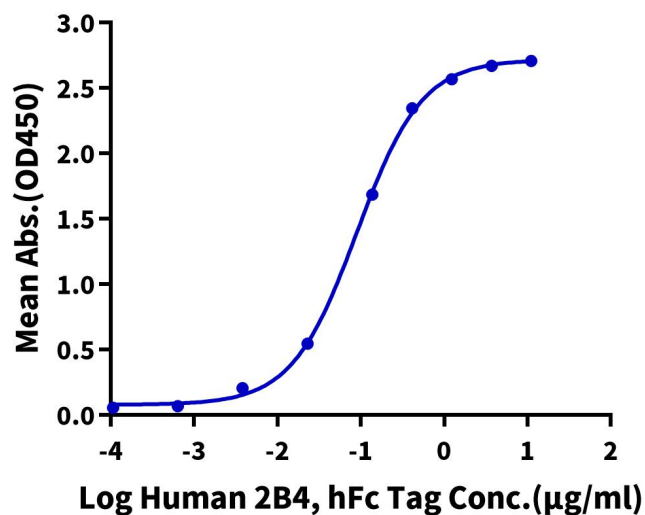


The purity of Human CD48 is greater than 95% as determined by SEC-HPLC.

ELISA Data

**Human CD48, His Tag ELISA**

0.2µg Human CD48, His Tag Per Well



Immobilized Human CD48, His Tag at 2µg/ml (100µl/well) on the plate. Dose response curve for Human 2B4, hFc Tag with the EC50 of 89.8ng/ml determined by ELISA.